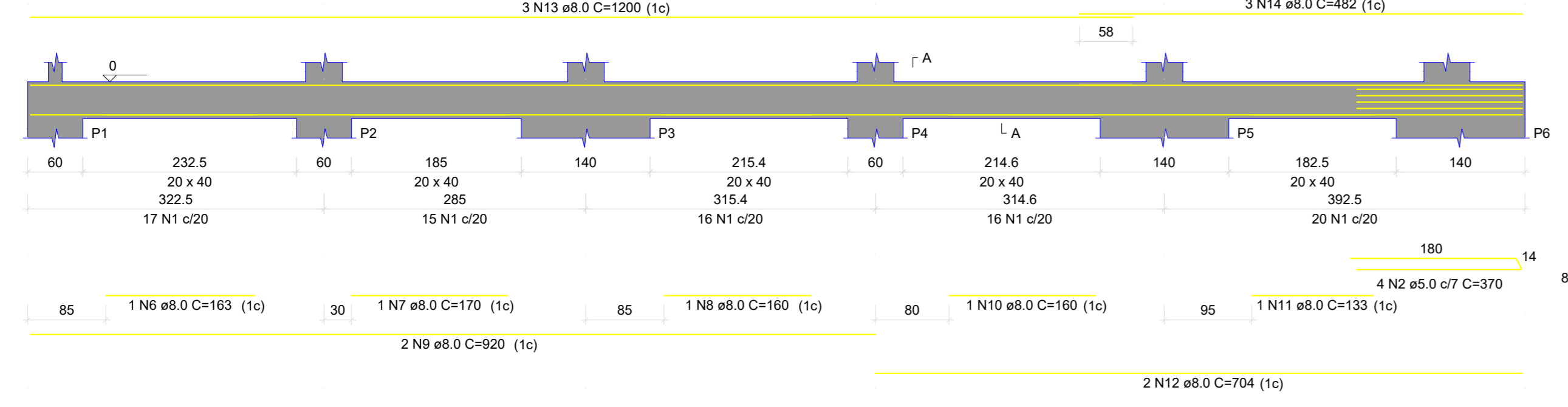
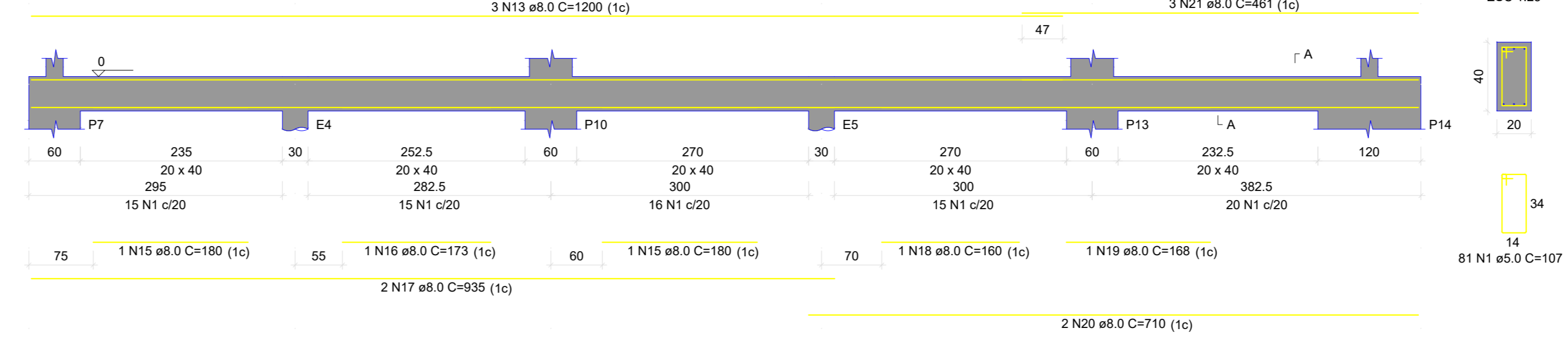


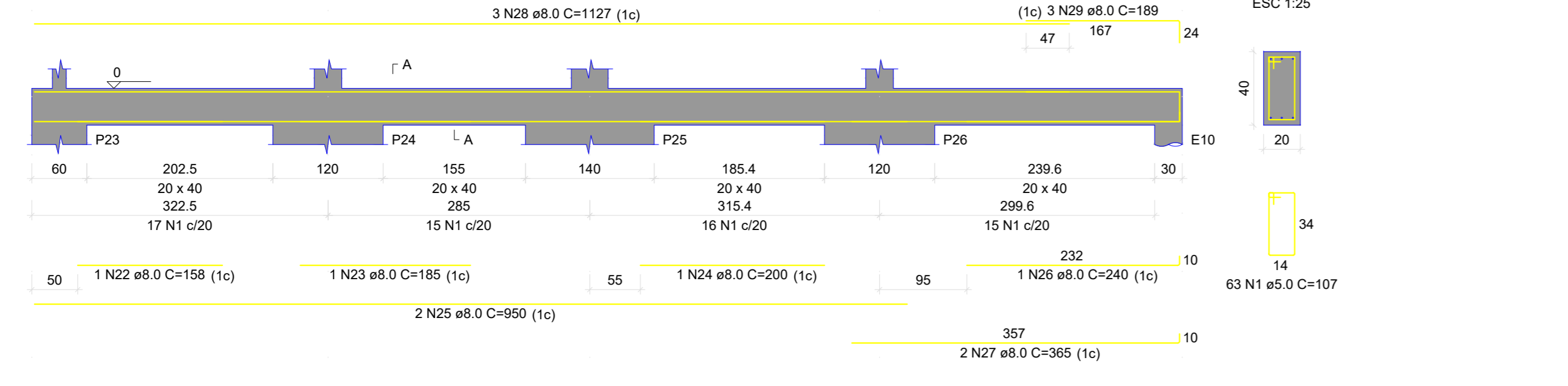
VB1
ESC 1:50



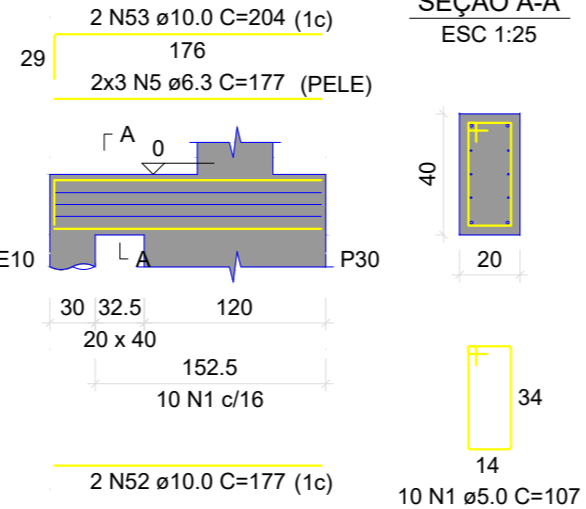
VB2
ESC 1:50



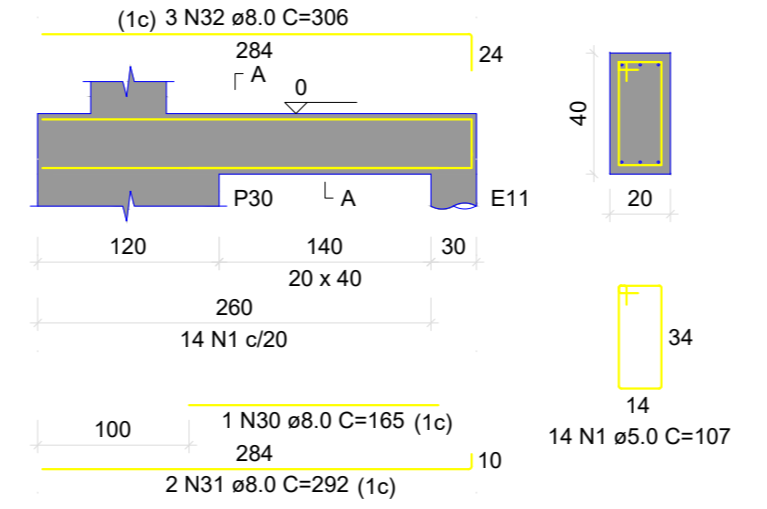
VB3
ESC 1:50



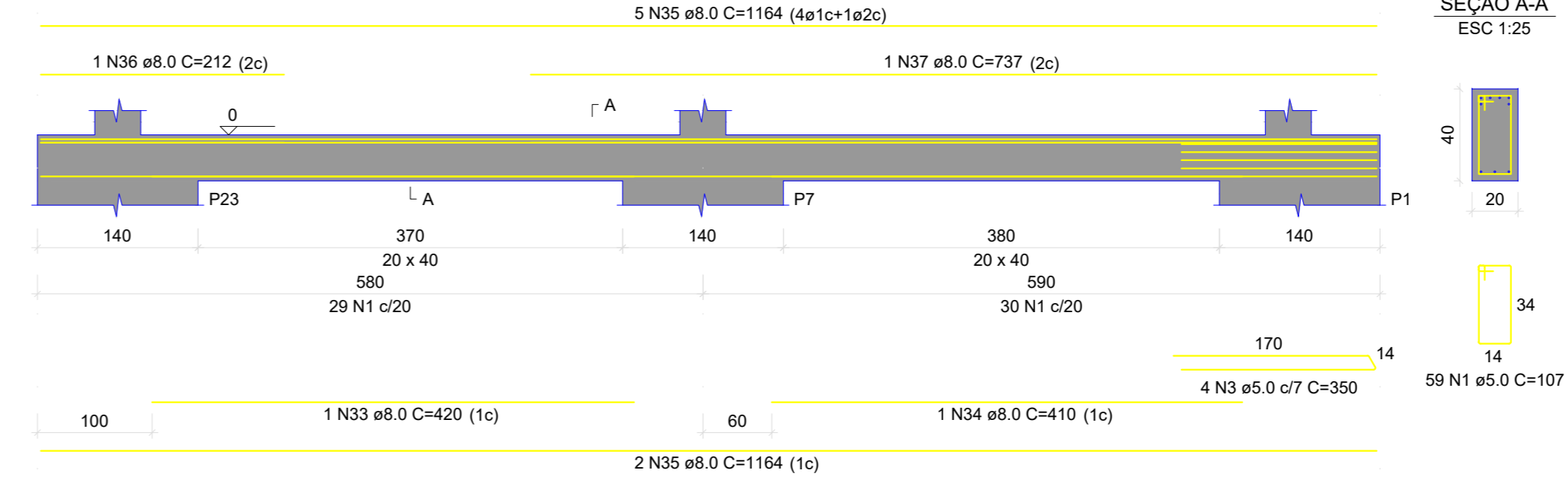
VB4
ESC 1:50



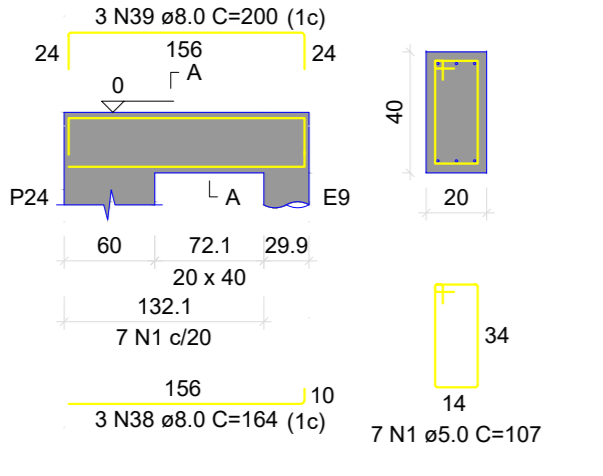
VB5
ESC 1:50



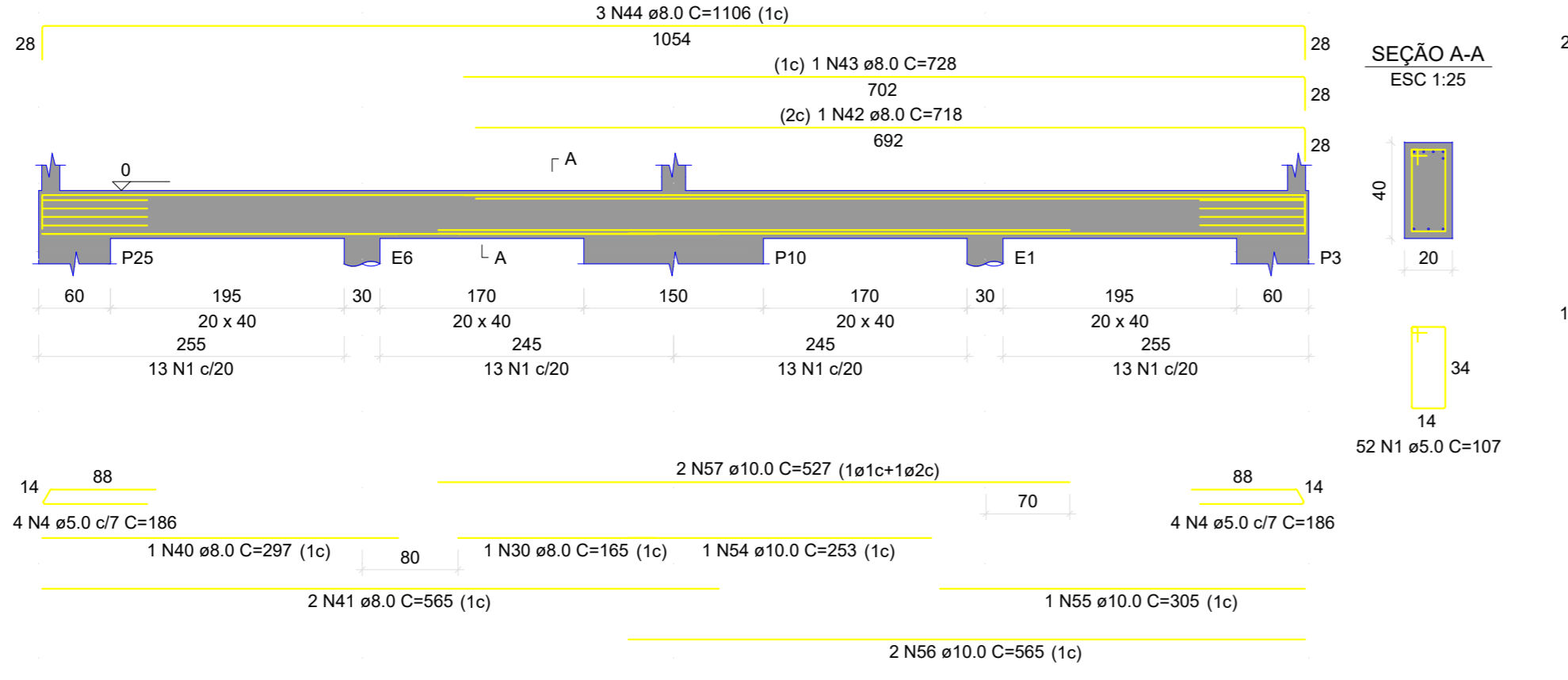
VB6
ESC 1:50



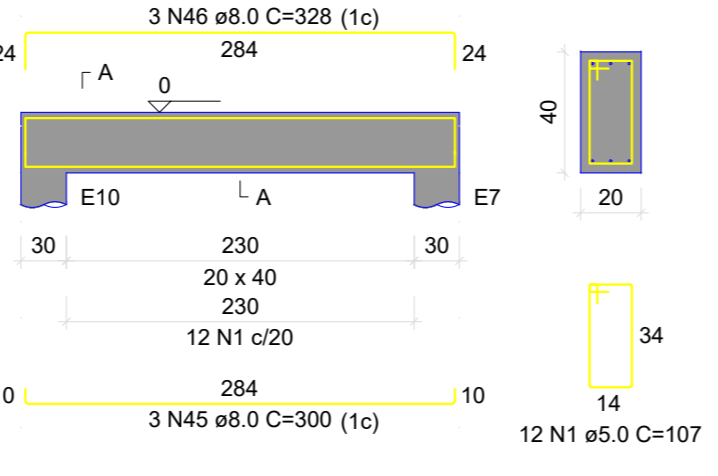
VB7
ESC 1:50



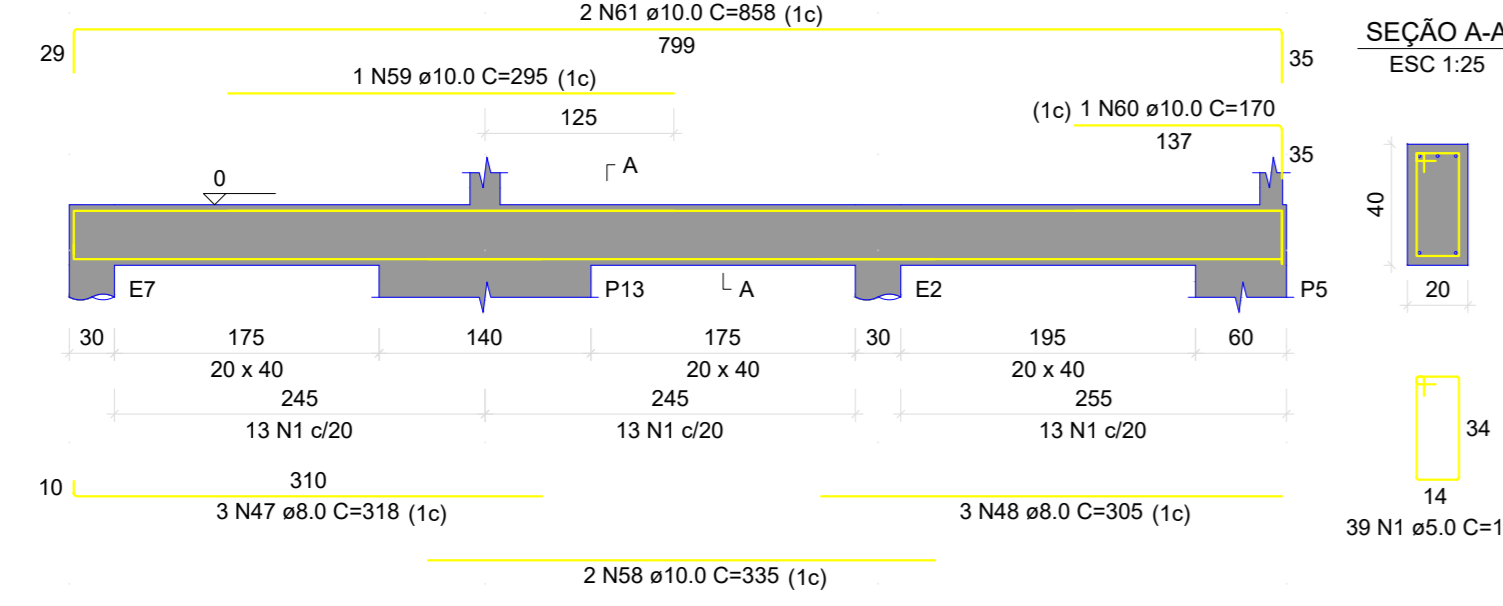
VB8
ESC 1:50



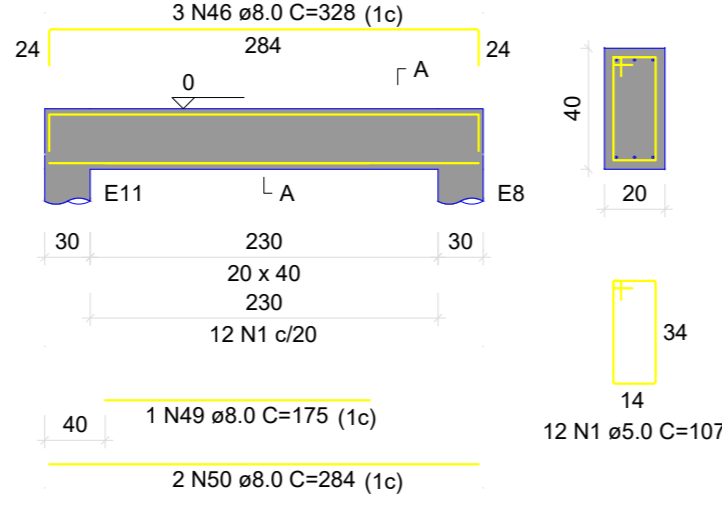
VB9
ESC 1:50



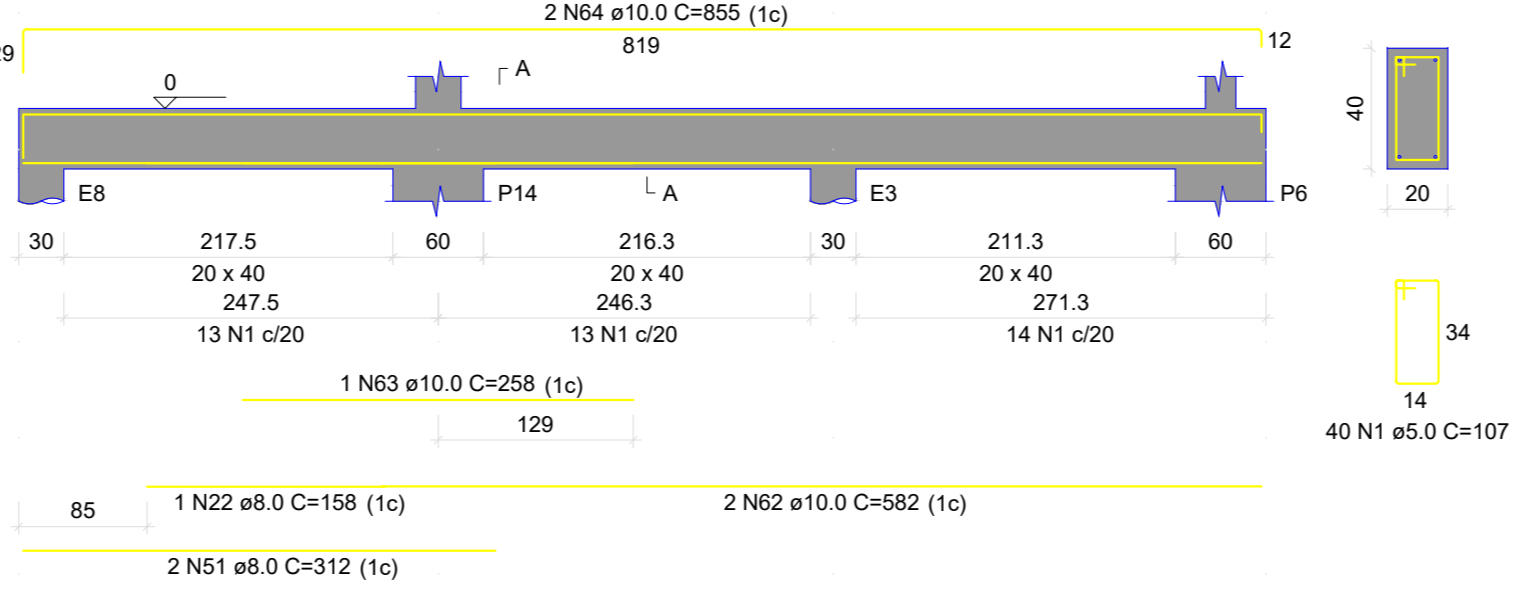
VB10
ESC 1:50



VB11
ESC 1:50



VB12
ESC 1:50



RELAÇÃO DO AÇO

CAÇO	N	DIAM (mm)	QUANT	CLINTE (cm)	C.TOTAL (cm)
CA50	1	5.0	473	107	60611
	2	5.0	4	370	1480
	3	5.0	4	360	1400
	4	5.0	8	196	1488
	5	6.3	6	177	1092
	6	8.0	1	163	163
	7	8.0	1	170	170
	8	8.0	1	160	160
	9	8.0	1	160	160
	10	8.0	1	160	160
	11	8.0	1	133	133
	12	8.0	2	704	1408
	13	8.0	6	1200	7200
	14	8.0	3	482	1446
	15	8.0	3	180	540
	16	8.0	1	173	173
	17	8.0	2	635	1270
	18	8.0	1	160	160
	19	8.0	1	168	168
	20	8.0	1	710	1420
	21	8.0	1	461	1582
	22	8.0	1	158	316
	23	8.0	1	185	185
	24	8.0	1	200	200
	25	8.0	2	850	1700
	26	8.0	1	240	240
	27	8.0	2	365	730
	28	8.0	3	1127	3381
	29	8.0	1	189	189
	30	8.0	1	165	330
	31	8.0	1	292	584
	32	8.0	1	306	306
	33	8.0	1	420	420
	34	8.0	1	410	814
	35	8.0	1	1164	2122
	36	8.0	1	212	727
	37	8.0	1	166	490
	38	8.0	3	230	690
	39	8.0	2	297	594
	40	8.0	2	965	1120
	41	8.0	1	728	728
	42	8.0	1	718	718
	43	8.0	1	728	728
	44	8.0	1	300	300
	45	8.0	3	328	984
	46	8.0	5	318	1590
	47	8.0	5	328	1640
	48	8.0	1	356	356
	49	8.0	1	175	175
	50	8.0	1	284	568
	51	8.0	1	312	624
	52	8.0	1	177	354
	53	10.0	1	204	408
	54	10.0	1	253	253
	55	10.0	1	365	365
	56	10.0	1	365	365
	57	10.0	1	365	365
	58	10.0	1	335	670
	59	10.0	1	295	295
	60	10.0	1	170	170
	61	10.0	2	858	1716
	62	10.0	1	350	116
	63	10.0	1	258	258
	64	10.0	2	855	1710

RESUMO DO AÇO

CAÇO	DIAM (mm)	C.TOTAL (m)	PESO = 10% (kg)
CA50	5.0	10.8	2.9
	6.3	508.8	410
	10.0	94.9	64.3
CA60	5.0	549.8	93.2

PESO TOTAL (kg)
CA50 286
CA60 93.2

Volume de concreto (C-25) = 5.33 m³
Área de forma = 66.50 m²

PROJETO ESTRUTURAL

RESIDENCIAL UNIFAMILIAR

VIGA BALDRAME

Resp. Téc.: **EDUARDO FELIPE LUIZ FLORENCIO** CONSELHO: CAU/SP A112058-1

Prop.: **CÂMARA MUNICIPAL DE CANITAR** data: **04/12**

Loc.: **RUA VEREADOR PEDRO MACEDO, PARTE "B" DO LOTE "N" A-1 - CANITAR-SP**

Esc.: **Escalas Indicadas**

PROJETO: EDUARDO FELIPE LUIZ FLORENCIO
CÂMARA MUNICIPAL DE CANITAR
CPF: 24.5640051-29

ARQUITETA: EDUARDO FELIPE LUIZ FLORENCIO
ARQUITETA: EDUARDO FELIPE LUIZ FLORENCIO
CAU/SP A112058-1

APROVAÇÃO: